



Outdoor Power Equipment

Starters & Alternators

- ✓ 100% new units
- ✓ Outright sales - No core charges
- ✓ Warranty rate reduction through extended field life of new units

Product line coverage

230+ part numbers

- ✓ Lawn and Garden units, electronics and components
- ✓ Golf carts generators

Field proven quality

- ✓ Premium brand Transpo electronics manufactured by WAI
- ✓ Premium grade WBD bearings
- ✓ Tested to OEM specifications
- ✓ Alternators – Thorough testing of output current at idle and full-load RPMs
- ✓ Starters – RPM, torque, voltage and solenoid performance

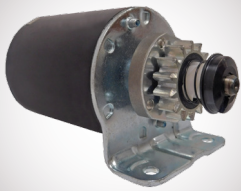
Validation testing includes:

- Endurance • Humidity • Power thermal cycling
- Vibration • Salt spray • Thermal shock



Top 10 Starters

5777N



**Starter-Briggs & Stratton PMDD
12 Volt, CCW, 14-Tooth Pinion**
Replaces: Briggs & Stratton 593934, 693551, John Deere LG693551, & more
Used on: Cub Cadet (1999-2006), John Deere (1998-2010), Sabo (2002-2011), Scotts (2000-2005), Toro (1999-2010)
Lester: 5777

5742N



**Starter-Briggs & Stratton PMDD
12 Volt, CCW, 16-Tooth Pinion**
Replaces: Briggs & Stratton 390838, 391423, 392749, 394805, 491766, 497594, 497595, 693054, & more
Used on: Briggs & Stratton (1972-2002), Cub Cadet (1972-2006), & more
Lester: 5742

5801N



**Starter-United Technologies PMDD
12 Volt, CCW, 10-Tooth Pinion**
Replaces: Kohler 32-098-01, 32-098-01S, 32-098-03, 32-098-03S, & more
Used on: Cub Cadet (2005-2012), New Holland Industrial (2007-2009), & more
Lester: 5801

6744N



Starter-Delco PMDD-0.8Kw/12 Volt, CCW, 10-Tooth Pinion
Replaces: Cub Cadet KH-25-098-09-S, Delco 10455513, 10455516, 8000335, 8000869, 8000870, & more
Used on: Cub Cadet (1994-2015), Deines (2004-2010), & more
Lester: 6744

5746N



**Starter-Briggs & Stratton PMDD
12 Volt, CCW, 16-Tooth Pinion**
Replaces: Briggs & Stratton 393499, 394943, 399169, 490420, 494148, 494198, 494990, 497401, & more
Used on: Cub Cadet (1987-2006), John Deere (1979-2014), & more
Lester: 5746, 5778

5796N



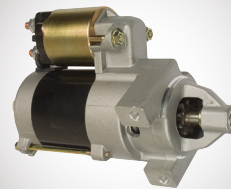
**Starter-United Technologies PMDD
12 Volt, CCW, 14-Tooth Pinion**
Replaces: Kohler 20-098-01, 20-098-01S, 20-098-05, 20-098-05S, & more
Used on: New Holland Industrial (2007-2009), Toro (2006-2009)
Lester: 5796

5954N



**Starter-Kawasaki PMDD
12 Volt, CCW, 10-Tooth Pinion**
Replaces: Kawasaki 21163-0711, 21163-0714, 21163-0727, 21163-0743, 21163-0749, 21163-7024, 21163-7034, 21163-7035, FR691V-AS04, & more
Used on: Cub Cadet (2012-2014)
Lester: 5954

17628N



Starter-Denso DD-0.6kW/12 Volt, CCW, 9-Tooth Pinion
Replaces: Denso 128000-7480, 228000-2640, John Deere AM107631, AM108390, AM124993, & more
Used on: Cub Cadet (1993-2003), Deines (2004-2010), & more
Lester: 17628

5951N



**Starter-United Technologies PMDD
12 Volt, CCW, 10-Tooth Pinion**
Replaces: John Deere AM133369, MIA11563, & more
Used on: Cub Cadet (2000-2008), New Holland Industrial (2004-2012), & more
Lester: 5951

5743N



**Starter-Briggs & Stratton PMDD
12 Volt, CCW, 16-Tooth Pinion**
Replaces: Briggs & Stratton 393017, 394674, 394808, 497596, John Deere AM38984, AM39287
Used on: Briggs & Stratton (1996-1998), Cub Cadet (1979-1986), & more
Lester: 5743



USA

WAI Corporate Florida
3300 Corporate Way
Miramar, FL 33025

Toll Free: 1.800.877.3340

CANADA

WAI Toronto
535 Millway Avenue, Unit 1
Vaughan, Ontario, Canada, L4K 3V4

Toll Free: 1.800.387.2807


WAI, A USA COMPANY

