



**Forklift**

## Starters & Alternators

- ✓ 100% new units - Outright sales
- ✓ No core charges or handling
- ✓ Warranty rate reduction through extended field life of new units
- ✓ Extensive coverage including late-model products

## Product line coverage

### 100+ part numbers

- ✓ Coverage on Gas-Propane-Diesel Models

## Field proven quality

- ✓ Premium brand Transpo electronics manufactured by WAI
- ✓ Premium grade WBD bearings
- ✓ Tested to OEM specifications
- ✓ Alternators – Thorough testing of output current at idle and full-load RPMs
- ✓ Starters – RPM, torque, voltage and solenoid performance

### Validation testing includes:

- Endurance
- Humidity
- Power thermal cycling
- Vibration
- Salt spray
- Thermal shock



# Top 10 Starters & Alternators



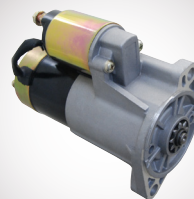
The Power of WAI

18096N



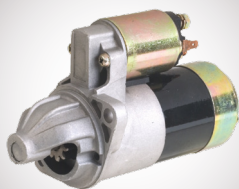
**Starter-Mitsubishi PMGR**  
**1.2kW/12 Volt, CW, 8-Tooth Pinion**  
**Replaces:** Clark 2314322, 3114995, Hyster 1534424, 2314322, 3114995, Mazda FFSC-18-400, & more  
**Used on:** Hyster (1998-2006), Nissan (1986-2006), Yale (1998-2006)  
**Lester:** 18096

17437N



**Starter-Mitsubishi PMGR**  
**1.2kW/12 Volt, CW, 9-Tooth Pinion**  
**Replaces:** Mitsubishi M001T60081, M001T60381, Nissan, Infiniti 23300-K9160, 23300-W9810  
**Used on:** Nissan (1975-2007), TCM Equipment (1987-2007)  
**Lester:** 17437

17176N



**Starter-Mitsubishi PMGR**  
**1.2kW/12 Volt, CW, 10-Tooth Pinion**  
**Replaces:** Clark 920971, 921615, 928805, Mitsubishi M001T79681, M001T79781, & more  
**Used on:** Clark (1992-2006), & more  
**Lester:** 17176, 19649

16831N



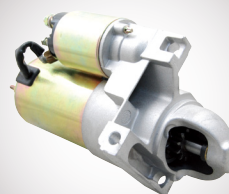
**Starter-Denso OSGR-1.4kW/12 Volt, CW, 9-Tooth Pinion**  
**Replaces:** Denso 028000-4000, 028000-4001, 028000-4020, 028000-4021, 028000-4022, 028000-4023, 028000-4024, 028000-5820, & more  
**Used on:** Toyota (1967-2007)  
**Lester:** 16578, 16831, 18410, 18515

18410N



**Starter-Denso OSGR-1.4kW/12 Volt, CW, 9-Tooth Pinion**  
**Replaces:** Denso 228000-4390, 228000-4391, 228000-4392, 228000-4840, Toyota 28100-20553-71, 28100-20553-71B, 28100-20553-84, & more  
**Used on:** Toyota (1993-2001)  
**Lester:** 18410

6788N



**Starter-Delco PG260L PMGR**  
**1.6kW/12 Volt, CW, 11-Tooth Pinion**  
**Replaces:** Delco 10465606, 8000193, 9000895, Hyster 1469603, & more  
**Used on:** Hyster (2002-2006)  
**Lester:** 6788, 6932

6792N



**Starter-Delco PG260G PMGR**  
**1.4kW/12 Volt, CW, 11-Tooth Pinion**  
**Replaces:** Delco 8000282, 9000839, 9000840, 9000884, & more  
**Used on:** Hyster (1998-2009), Mercruiser (1995-2009), & more  
**Lester:** 6791, 6792

12566N



**Alternator-Mitsubishi IR/IF-50 Amp/12 Volt, CW, 1-Groove Pulley**  
**Replaces:** Lancia 60667066, Mitsubishi A007TA3371, A007TA3377, A7TA3377A, & more  
**Used on:** Caterpillar Ag. & Ind. (2004-2009), Kalmar AC (2001-2005), & more  
**Lester:** 12566

12138N



**Alternator-Mitsubishi IR/IF-40 Amp/12 Volt, CW, 1-Groove Pulley**  
**Replaces:** Clark 7000215, Hyster 1361853, 1450928, 3068342, 3114961, 3123908, 800045600, & more  
**Used on:** Hyster (1992-2006), Sumitomo Yale (1992-2002), Yale (1985-2006)  
**Lester:** 12138

12357N



**Alternator-Denso IR/IF-50 Amp/12 Volt, CW, Neg. Grd., 1-Groove Pulley**  
**Replaces:** Denso 101211-3730, 101211-3731, 101211-8580, 101211-8650, 101211-8700, & more  
**Used on:** Toyota (1993-2001)  
**Lester:** 12357



USA

WAI Corporate Florida  
 3300 Corporate Way  
 Miramar, FL 33025

Toll Free: 1.800.877.3340

CANADA

WAI Toronto  
 535 Millway Avenue, Unit 1  
 Vaughan, Ontario, Canada, L4K 3V4

Toll Free: 1.800.387.2807

WAI, A USA COMPANY

